



Magill, SA
33A & 33B Woodforde Road

3 BED
2 BATH
2 CAR



Set in leafy Magill and located just metres from Magill Primary and the newly refreshed shopping and dining experiences of the Magill Village precinct, these homes are designed to complement a busy lifestyle for executive couples and families alike.

As you would expect from a quality and refined builder such as Lofty Building Group, these custom designed homes all have quality finishes and luxury fittings with large picture windows, high ceilings, quality floor coverings and a twenty five year structural guarantee. Make no mistake this is not a 'house and land package' this is for a fully 'turn-key' experience with every little detail all taken care for you.

There is room for the whole family with two living areas and three large double bedrooms. The master suite enjoys sumptuous fully tiled ensuite and huge walk in robe. Bedrooms two and three have the added benefit of built in robes.

\$679,000 - \$699,000

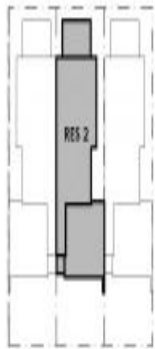
Contact: Justin Gall
0418 848 309

Type: House

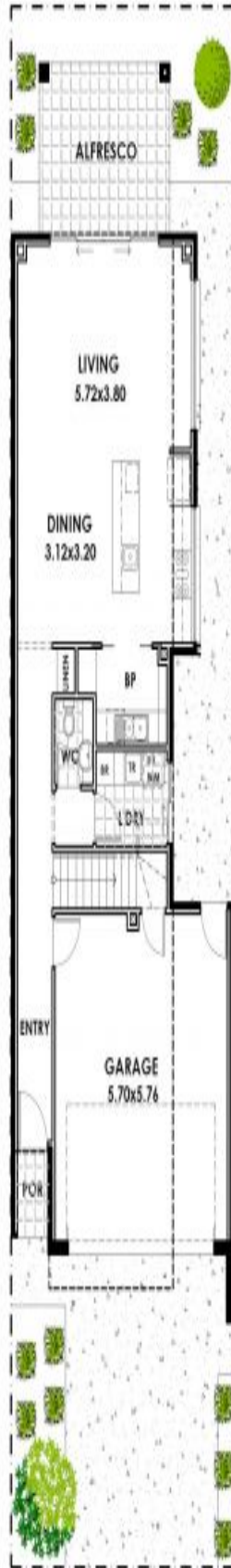
Land: 200m2

<http://www.justingall.com>

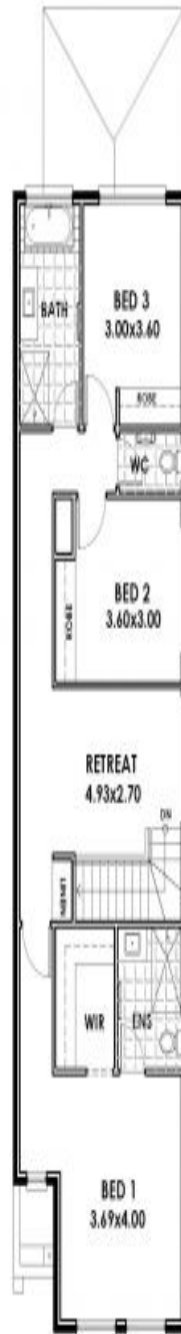
RESIDENCE 2	
AREAS	m ²
LOWER LIVING	75.00
UPPER LIVING	95.40
GARAGE	36.00
ALFRESCO	12.00
POORCH	2.20
TOTAL	220.60
SITE AREA	200m ²



WOODFORDE ROAD



GROUND FLOOR / SITE PLAN



FIRST FLOOR PLAN

Plans shown are only indicative of layout. Dimensions are approximate.

Magill, SA
33A & 33B Woodforde Road