



**Linden Park, SA**  
51 Devereux Road

**3** BED  
**1** BATH  
**1** CAR



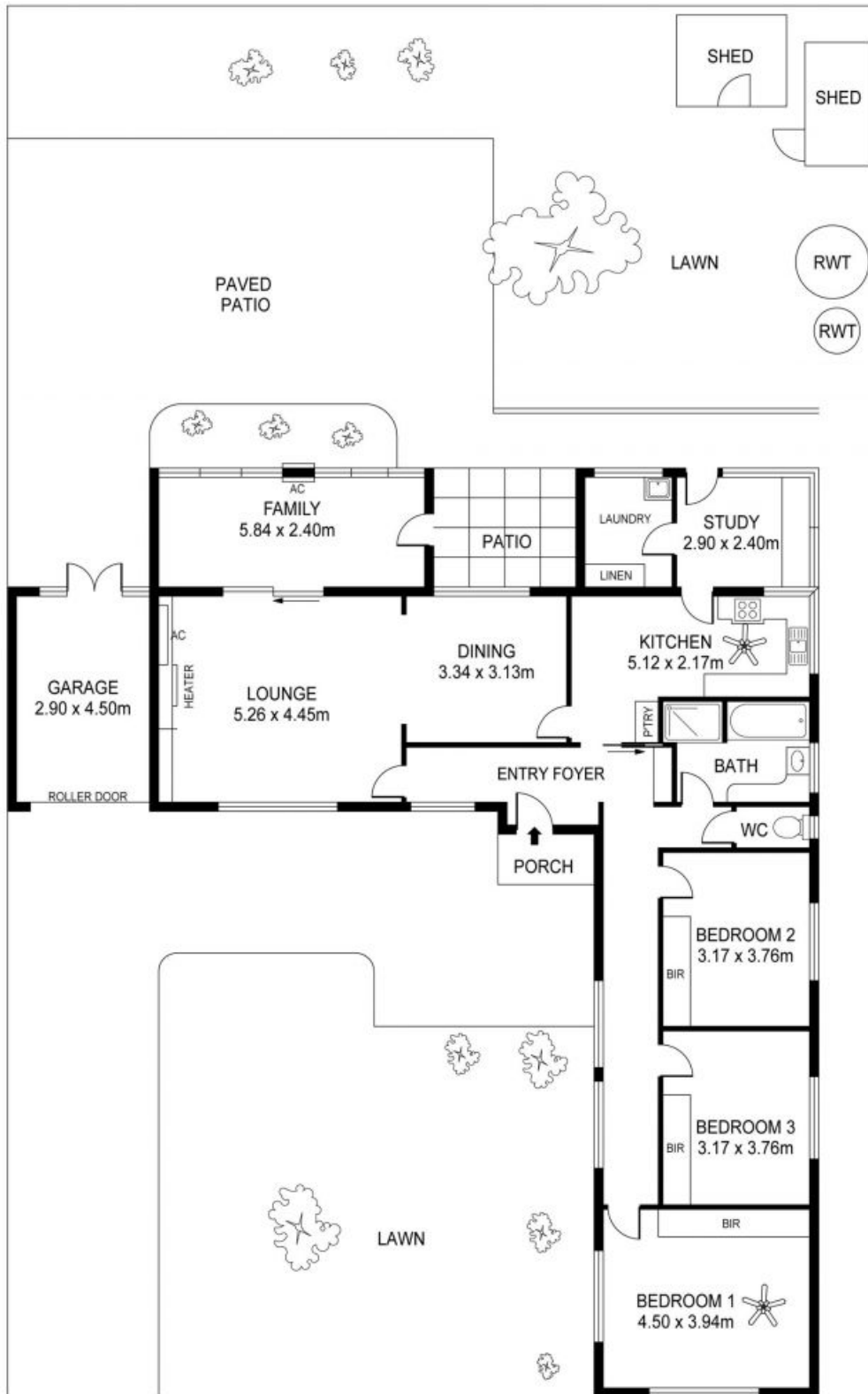
This immaculate, original home is the perfect landing for the growing family or for those wanting to take advantage of the blue chip 720sqm land for future use.

Located in one of the tightest held suburbs in Adelaide and under 5km from the CBD this position is perfect for those wanting to give their kids the best start in life being just 750m from Linden Park Primary School and a 4 minute drive to Glenunga International High School.

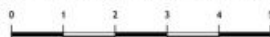
This beautiful 1950's stone fronted home enjoys a generous formal lounge room with large picture windows taking in views of the lovely manicured front garden. Adjacent the lounge is a versatile sunroom/family room and a formal dining.

**SOLD**

**Contact:** Justin Gall  
0418 848 309  
**Type:** House  
**Sold Date:** 31/05/2019  
**Land:** 725m2  
<http://www.justingall.com>



51 DEVEREUX ROAD, LINDEN PARK  
 APPROX. GROSS INTERNAL FLOOR AREA 150 SQ M



Plans shown are only indicative of layout. Dimensions are approximate.

**Linden Park, SA**  
 51 Devereux Road