



Woodforde, SA
31 Kintyre Road

4
BED

2
BATH

2
CAR

JUSTIN
GALL
REAL ESTATE

SOLD

Contact: Cecily Gall
0411 569 918

Type: House

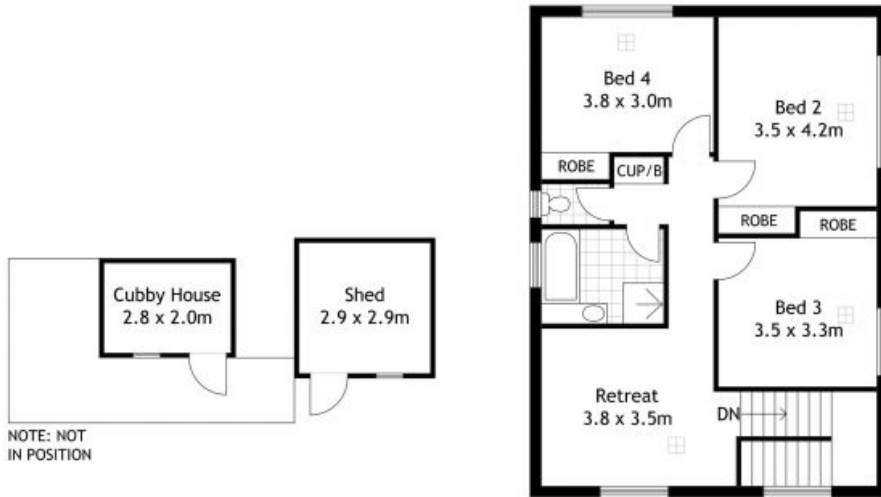
Sold Date: 07/02/2016

Land: 1500m2

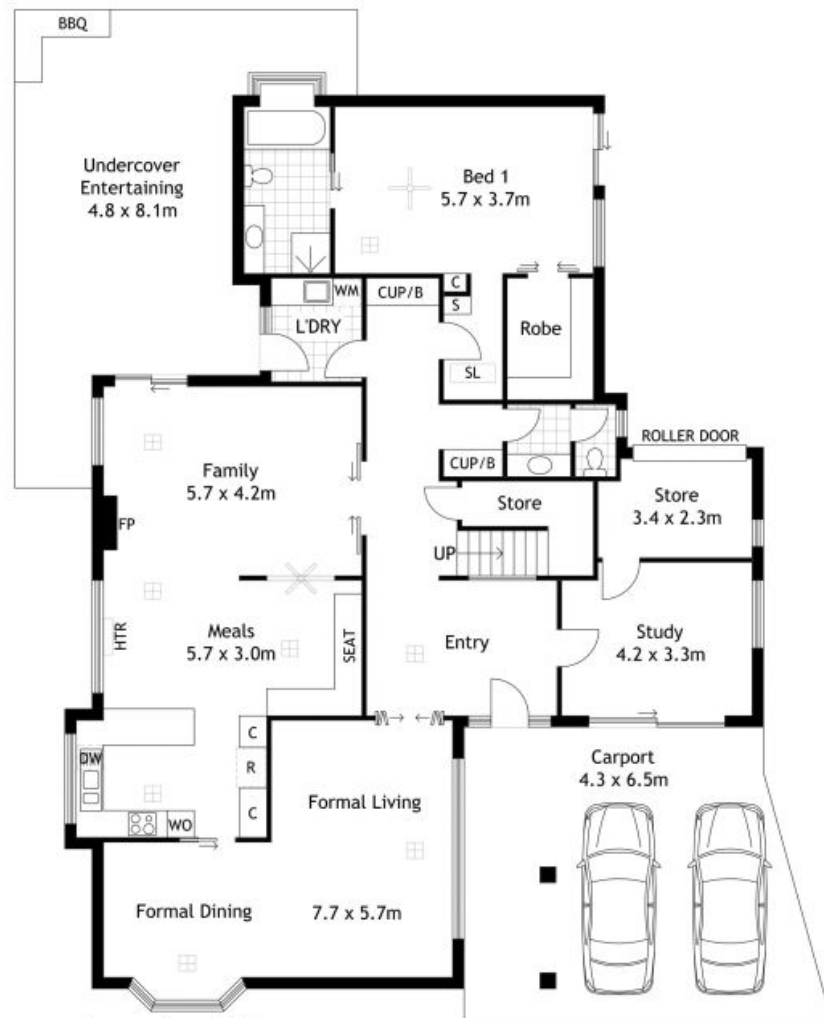
<http://www.justingall.com>

Inspection By Appointment At A Time To Suit You
Phone Cecily Gall on 8333 0000 or 0411 569 918

Enviably located in one of Adelaide's Premier Eastern Foothills suburbs above Rostrevor College, within short walking distance to the acclaimed Morialta Conservation Park and within approx. 15 minutes of the CBD, integrated with calm surrounds, offering breathtaking views as far as the city and beyond to the gulf, together with views over the Adelaide hills, this home is the one you wished you lived in and now it can be yours.



Upper Level Plan



Lower Level Plan

Scale in metres. Indicative only. Dimensions are approximate. All information contained herein is gathered from sources we believe to be reliable. However, we cannot guarantee its accuracy and interested persons should rely on their own enquiry.

31 Kintyre Road, Woodforde

Plans shown are only indicative of layout. Dimensions are approximate.

Woodforde, SA
31 Kintyre Road